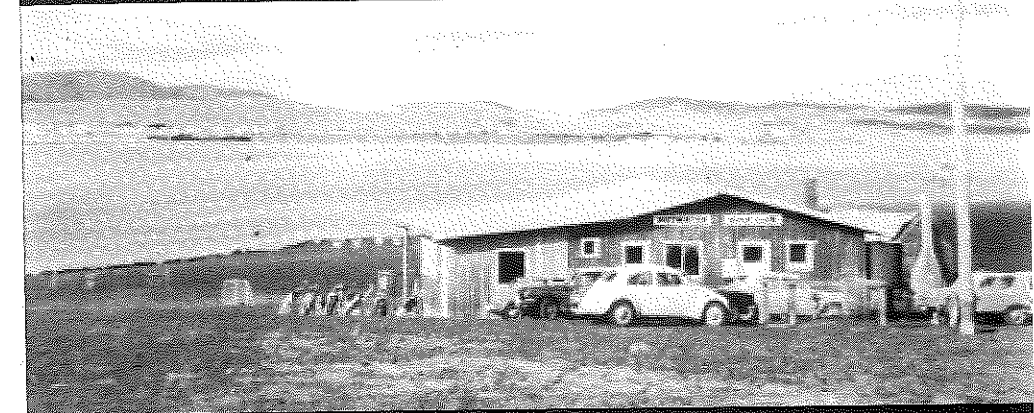




THE PITTWATER GOLF CLUB INC.



1950 - 2000



THE PITTWATER GOLF CLUB INC.

THE FIRST FIFTY YEARS

1950 - 2000

COMPILED BY KEVIN CONNOR

PREFACE

Early in 1999 it was strongly suggested to me by the club President Neil Johnson that I should give consideration to compiling a history of the Pittwater Golf Club to coincide with the club's 50th birthday in 2000.

I had some misgivings about the idea as I felt that advancing years may have impaired my ability to undertake the task.

When I put this to Neil he said that was all the more reason why I should do it, adding that it would be something for which I would be remembered.

So nicely put!

I accepted the challenge.

Here goes.

K.C.

PRELIMINARIES

Early in 1950 a group of residents from the Sorell area decided to call a public meeting with the object of forming a golf club. The group included Archie Peacock and Athol Hunt who played golf at the Richmond Golf Club, then situated close to the Richmond town centre.

The meeting was held in the Sorell parish hall on the 10th April 1950, at which it was made known that Mr S. Woolnough who owned a property at Pawleena would make a portion of his property available for the establishment of a golf course. At the meeting Mr S. Woolnough was elected President, Mr Arch Hunt Secretary and Mr G. Featherstone Treasurer. It was decided that the Club be titled the Pawleena Golf Club.

Initial annual subscription was fixed at two guineas. The Pawleena hall was situated on the edge of the proposed course and it was decided to seek the use of the hall supper room as a club house. Little progress was made during the winter of 1950 and the amount of spring growth prompted the club to look for an alternative site.

On November 11th 1950 a special general meeting was held to discuss the possibility of moving to part of the Frogmore property at Penna, owned by Messrs C.J. & W.J. Reynolds. It was decided to ask Mr Thornycroft of the Royal Botanical Gardens to inspect the Pawleena site and the Penna property and to advise which would be the best site to put into shape for play, having regard also to the more economical outcome.

At a meeting held on January 5th 1951, Mr Thornycroft's report was presented. The report confirmed that the Penna site could be ready for play at short notice and that 9 holes could be laid out. One of the problems with Pawleena was that it would be impossible to pay the owner enough to cover the loss of pasture.

It was decided to abandon the Pawleena site and that Mr Thornycroft be asked to map out a course at Penna and that discussions be held with the Reynolds Brothers. At a meeting held on January 25th 1951, it was "*Moved Mr A. Hunt, seconded Mr R. Featherstone that an agreement be entered into with Messrs C.J. & W.J. Reynolds for a lease of portion of their property laid out by Mr Thornycroft as Golflinks for a period of five years, with a rental of £10 per annum.*"

The motion was carried unanimously.

The first Annual General Meeting was held on March 9th 1951 and officials elected were: President – Mr A.C. Peacock; Secretary/Treasurer – Mr G. Featherstone; while Mr C.J. Reynolds was made the Patron. At this meeting the name was changed to "The Pittwater Golf Club".

THE CLUB WAS ON ITS WAY!

THE REAL BEGINNING

An extract from the minutes of the first meeting after the 1951 Annual General Meeting disclosed that a programme of work would be:

- *cut thistles*
- *cut horehound*
- *build tees 1, 4 and 8*
- *erect 4 stiles*
- *remove tree by waterhole*
- *clear briars near 1st green*
- *repair golf house*
- *clear debris around golf house*
- *remove wire at 5th green*
- *fill in rabbit burrows.*

Working bees were to be conducted on each Saturday afternoon. The club house was a typical old farm worker's hut, which, during part of World War II, had been occupied by two Italian prisoners of war who worked as farm hands. At one end of the one-room hut was a large open fire place with hooks on which to hang kettles and pans – a real home away from home!

The first competition at the new links was played on June 6th 1951. The course was a large open area practically devoid of trees. A fence ran across the property from about the present 9th green to the Orielton Lagoon.

Course Layout:

Hole 1: 339 yards, par 4

From back a little bit from our present 3rd tee to what is our present 4th green. The pine tree (semi-bare) at the corner of the orchard was the only one of a line of pines, which survived the 1967 fires. Mud flats came up to the eastern edge of the green. Later this area was filled in with soil from the Midway Point streets development. There were a few wattles on the right hand side of the fairway and one right in the middle. This tree was not removed until 1965.

Hole 2: 515 yards, par 5

From the present teeing area of the current 5th to a green which was near enough to the present 5th. The fence mentioned earlier ran from the Lagoon boundary (near the pines) to a point near the back of the present 9th green. The low lying area near the boundary has over time been reclaimed.

Hole 3: 239 yards, par 4

From a tee about 70 metres back from the present 6th tee to what is now the 6th green. The site of the tee is still visible. A big gum tree stood to the left of the green and if you look closely you can detect the spot.

Hole 4: 218 yards, par 3

From the area of the present 7th tee to a green between the present 1st green and where the land starts to slope down to the present 7th green.

Hole 5: 200 yards, par 3

From a tee about 60 metres back from the wattle tree on the left of the present 7th fairway to a green just beyond the present 7th. The teeing area is still clearly seen.

Hole 6: 128 yards, par 3

From the present ladies 17th tee but facing in the opposite way, going over the pond to a green on the top of the bank.

Hole 7: 449 yards, par 5

From a tee near the present dahlia bed to a green located in what is now a practice area. This fairway ran close to the boundary fence, which then ran from about the present 8th tee to the last gum tree on the right hand side of the gap leading to the present fairway proper. If you look closely on the northern side of the tree trunk you can see a gap in the bark where a gate was attached to the fence. Then to the left of the present fence line, to the left hand side of the present 9th green.

Hole 8: 334 yards, par 4

From a tee somewhere between the present 9th green and 1st tee to a green near enough to the present 1st green.

Hole 9: 334 yards, par 4

The 9th tee was about where the present 2nd is situated and the green near where the present 2nd is sited.

Remember, the whole course was open pasture land with only a few old gums and wattles, most of which failed to survive the 1967 fire.

In November 1951 it was decided to enlarge the committee to better manage the club's affairs. The first enlarged committee comprised Mr A.C. Peacock (Chairman), Messrs A.H. Hunt & T. Clark (Vice Presidents), Mr R.G. Featherstone (Secretary/Treasurer) and Messrs M. Denholm, R. Clark and M. Pearce (committeemen).

A report from the President in April 1952 stated that a successful start had been made on the new links. Special mention was made of the high degree of co-operation and assistance given by the Reynolds Brothers in preparation of the course.

At an annual meeting held at that time, the Treasurer reported a credit balance of £16/6-/6d. Competition fees at 2 shillings a time had yielded £13/6-. It was decided to apply for affiliation with the Southern Tasmanian Golf Union.

Future committee meetings were to be held at the club house on the last Saturday of each month and working bees would be undertaken on the first Saturday in each month. A competition was scheduled for Saturday, May 12th 1952.

At a meeting on August 2nd 1952 the following jobs were listed for the working bees:

- *cupboard in club house*
- *fence around lavatory (good idea!)*
- *top dress greens with soil from the Reynolds Brothers orchard*
- *sand to be obtained so that a heap could be provided at each green.*

It was decided to arrange for power to be connected to the club house and Mr W. Reynolds offered to make available a pole for this purpose. Mr A. Hunt suggested that low evergreen trees should be planted to mark major fairways, with the owners giving permission for this to be done.

At the annual general meeting held in March 1953 the President noted that only a few new members had joined the club but he hoped that membership would soon increase. The Treasurer reported that the club had a balance on hand of £18/6-/9d.

At a committee meeting following the AGM it was decided that the lavatory be made safe and a drum installed (even better idea!). An endeavour was to be made to obtain labour for assistance in

preparation of greens and teeing areas, and that the club house be painted – kalsomined.

OFFICIAL OPENING DAY: This was set for Saturday April 18th 1953. Mr T.G. Pearsall MHA had agreed to attend and perform the official opening ceremony. A mixed foursome event was to be played, together with longest drives and putting contests. Mr A.H. Hunt was to prepare a programme for the first 6 weeks. It was also decided to purchase 12 red gums and that tree guards be made.

At the AGM held in April 1954, the President reported that the club had experienced a year of quiet progress. The Treasurer's statement disclosed a balance of £11/7-/10d. Mr M. Denholm was elected President and Mr Arch Hunt was elected the club's first Captain.

1954 - 1959

Early in 1954 it was arranged for the fairways to be cut by Mr D. Kemp, a local contractor. A ballot was held among the committee to allocate the responsibility to look after the greens and tees. This involved the mowing and sweeping of these areas prior to the start of Saturday competitions. The 1954 season start was scheduled for Saturday, May 1st. A game against the Colebrook Golf Club was scheduled for Sunday, July 4th.

At a meeting held on July 3rd 1954 it was agreed to obtain some trees, which the Sorell Council had advised were available (presumably for free).

The first club championship was played in 1954 and was won by Mr Arch Hunt. The Perpetual Championship Cup was donated by Mr Athol Hunt.

Early in 1955 some of the teeing areas were reconstructed by Mr W. Reynolds using his bulldozer, the very same piece of machinery that was parked behind the present 3rd green during the early 1990s. The

Reynolds Trophy for match play was inaugurated in 1955. The cup was inscribed as the *C.A. Reynolds Memorial Trophy* and was donated by the Reynolds family in memory of Mr Clem Reynolds, father of Jim and Bill. The first winner was Arch Hunt.

It seems that no official committee meetings were held for much of 1955-56. No doubt the club's affairs were conducted on an "ad hoc" basis on Saturdays.

In reporting on the 1956 year, the President, Mr W. Reynolds, said the club had experienced a good year but that the course would be greatly improved if more attention could be given to the greens. It was resolved that regular meetings of club members should be held.

Subscriptions for 1957 were set at £2/2/- and £1/1- for associates. The 1957 season opened on Saturday, May 11th. The A.C. Peacock Memorial Trophy was first played for in this year, the perpetual trophy having been donated by Mr John Wright, Mr Peacock's stepson. Arch Hunt was the first winner. During the year the club advertised for members.

The Associates group came into being in this year (1957). Mrs G. Lovell was elected the first Associates President, Mrs D. Hunt Captain and Mrs D. Reynolds Secretary/Treasurer.

The first mention of water being laid on to the greens is contained in the minutes of the Annual General Meeting of March 14th 1958. Subsequently a general meeting of members further discussed this idea. Mr Hunt pointed out that water to the greens would be useless unless all greens were fenced. A decision was then made to pipe water from the lagoon near the present 7th green as far as the 8th green (now 1st) and to commence fencing the greens. The water pump was already in existence and was the property of Mr W. Reynolds who had used it to provide water for garden use. Mr Reynolds gave permission for his pump to be used by the club. It was agreed that the course layout be altered commencing with the new 1st green (now 3rd).

At the AGM held on March 6th 1959, Mr Cyril Dixon was elected President and Mr Bob Macdonald was elected Captain.

Work on the course approved included the completion of fencing around the greens, planting more trees in winter, finishing off the toilets (about time!) and the preparation of the new green to be used as the 1st.

In 1959 the club conducted its first annual ex-servicemen's day, the Perpetual Trophy for which was donated by Arch Hunt in memory of his father Athol Hunt, one of the club's foundation members. Athol Hunt, who conducted a business in Sorell, was a World War I veteran and was very prominent in RSL affairs.

At a general meeting held in December 1959, it was decided to again alter the layout of the course. The 8th was to become the 1st, the 9th to become the 2nd, the 1st to become the 3rd, and so on. This is mostly the way it is now except for the relocation of the 8th green.

Green fees were set at 3/-. The Associates were to receive 10/- of each Associate subscription and they were to retain all of their competition entry fees.

-
- Be a good loser, but an even better winner.
 - If you want to hit the ball further, hit it harder.
 - Don't put your temper on display; no one is going to buy it.
 - Never pick up a lost ball until it has stopped rolling.
 - The difference between golf and government is that in golf you can't improve your lie.

1960-1966

Early in 1960 it was decided that the main competition for members would be held on Saturdays and the 1960 fixtures were arranged accordingly. Pittwater entered the Southern Country Pennant Competition in 1960 and fielded teams in A & B Grades. The B Grade team won their way to the final and played Huonville on September 26th at Royal Hobart (Rosny). Huonville won the final 4½ - 2½. Pittwater was represented in the final by G. Barwick, W. Reynolds, W. Barwick, B. Macdonald, T. Bush, A. Hunt & K. Connor.

The first Associates Club championship was played in 1960 and won by Mrs C. Batt. Club membership in 1960 comprised 28 members and 14 associates.

At the AGM held on November 25th 1960 Mr L.C. Wheatley was elected President. At that meeting Mr W. Reynolds was elected the club's first life member "in recognition of the part he had played in the construction and maintenance of the course".

Mention was made of the proposal to erect a new club house and it was envisaged that work would commence early in 1961. A draft plan submitted by Mr T. Bush was approved and fundraising activities to held the building fund occupied a lot of time. The first half of 1961 was dominated by the erection of the new club house. The President Les Wheatley played a leading role in the project, the labour for which was nearly all voluntary. Members were invited to make loans to the club in units of £5 to help finance the club house. £275 was raised in this manner.

To August 1961 the club house had cost approximately £600 (materials). Some "finishing off" remained to be done and at a meeting of members held in the new club house on August 8th 1961 it was decided to do this work at working bees, after the end of the playing season which ran from March 25th to October 8th.

As anticipated, the new club house facility attracted a host of new members. Between June and November of 1961, 107 members including Associates were admitted to membership. The time and money spent on the new club house was well and truly justified.

THE PITTWATER GOLF CLUB HAD TAKEN A BIG LEAP FORWARD

Mr J. Abel had offered to mow all greens and relocate holes each week for 30/- per week and would do other necessary work at an hourly rate. This offer was accepted. A 4-stroke Turner 19" rotary cut mower with grass catcher was purchased for £65 (and this seems to have been the first piece of motorized equipment that the club owned).

At a special meeting of members held at the club house on December 11th 1961 a revised club constitution was adopted. At the AGM held on February 26th 1962 Mr Colin Brown was elected President and Mr Kevin Cleaver was elected Secretary.

1962 was a year of consolidation with the course being re-assessed during the year, following a revised layout being introduced. Furniture was obtained for the club house – trestle tables, chairs, etc. The club continued to field teams in the Country Pennant Competition. Some of the loans re the new club house were repaid. Discussions were held with the Mines Department about boring for water on the course.

During 1962 a social committee comprising members and associates was formed. A resolution is recorded in the minutes of a committee meeting held on June 4th 1962 that the erection of a toilet on the course be investigated (what happened to that idea?).

At the AGM held in February 1963 mention was made of the desirability of obtaining a gang mower for cutting the fairways. Three teams were entered in the 1963 pennant series: A Grade, 1 team of 11; C. Grade, 2 teams of 9.

During 1963 it was decided that a new 8th green and tee be established, ie to where they are now located. After carrying out tests for bore water, the Mines Department reported that the salt content of the water was too high for irrigation purposes.

Although it had earlier been decided to close the course from December 1st till further notice, a meeting held on December 2nd 1963 agreed that it could remain open but the ball should be "teed-up" on all fairways. Three teams were entered for the 1963 pennant series, in A, B & C grades. Competition fees were set at 2/-. Navy blue and white were adopted as the club colours. Committee members were allocated car parking spaces. The greens committee was given the task of selecting extra trees for the course.

At the AGM held on February 3rd 1964, 50 members were present (how many do we get these days?).

In July 1964 a working bee was held to carry out work to enable the new 8th green to be brought into use. During the 1964 year a sub-committee was formed to investigate the purchase of a suitable tractor.

Subscriptions 1964:

<u>Men</u>	£	s	d	<u>Ladies</u>	£	s	d
Nomination Fee	4	4	0	Nomination Fee	2	2	0
Subscriptions	4	4	0	Subscriptions	2	2	0

A program was put in place during 1964 to reconstruct some of the greens. During the year the water main to Sorell via Midway Point was laid and the Water Board was requested to provide two connections to service the club, one close to the club house and one near the 9th tee. The committee commenced deliberations on a project to reticulate the mains water to all tees and greens. Later in the year the new 8th green was brought into use and the 9th tee was repositioned.

At the AGM held in February 1965 life membership was bestowed on Mrs Greta Lovell, who had served the club as President of the Associates from 1957 to 1965.

A revised constitution was adopted and a waiting list for membership was being maintained. During 1965 the starting time for Saturday competitions was to be between 11am and 1pm and where possible a starting time sheet was to be used. An officer of the day would be rostered to be in charge of each Saturday competition.

At a committee meeting held in May 1965 it was resolved to obtain a new towel for the ball washer (big decision that!). It was decided to construct a verandah to the club house and to batten the underneath portion. Mr C.F. Brown subsequently undertook to do this work.

Green fees were set at 4/- Monday to Friday and 6/- on Sundays and public holidays. Green fee players were not allowed on Saturdays.

During 1965 more trees were planted. All greens had been the subject of a concentrated program of consolidation during the year and were established basically as we now know them, albeit surrounded by fences.

Fees for 1966 were set as follows – decimal currency:

<u>Men</u>	\$	<u>Ladies</u>	\$
Nomination Fee	13	Nomination Fee	7
Subscriptions	15	Subscriptions	8

Lower fees for juniors.

Early in 1966, Mr E. Morgan was engaged as permanent part-time green keeper. He resigned in the 1967 year. Late in 1966, it was decided to make a start on the watering system to the tees and greens.

TRAGEDY

On Tuesday February 7th 1967 bushfires swept a great portion of South East Tasmania. The Penna area was greatly affected, with the fire sweeping down the grazing areas north of Midway Point. Four people lost their lives in Penna and many houses and outbuildings were destroyed.

Bill & Dorothy Reynolds saved their house but it was a close call. The old Frogmore residence situated in the "orchard" area and occupied by Mr & Mrs Hall was wiped out in minutes. Mr & Mrs Hall had driven in their car to the water's edge near the 6th green. As they looked back they remarked, one to the other, that the golf house had seemingly survived. However they watched shortly afterwards as it exploded into flames, being completely destroyed, as was the old club house (worker's hut) nearby.

Nearly all the grass on the course was burnt off. A large barn situated on the Reynolds property close to the turnoff to the club from Penna Road was gutted. It had been full of grass hay bales. Almost immediately our insurance company paid us \$6500, being the amount of insurance on the club house. Subsequently we received a grant of \$2500 from the State Government.

RECOVERY

At an emergency meeting held on February 9th 1967 it was decided to erect a tool/machinery shed sufficient in size to serve as a temporary club house. Mr C.F. Brown undertook to prepare sketch plans for the proposed shed and provide an estimate of cost. The shed was constructed in quick time with the start of the official 1967 season being delayed until the shed was habitable. Items such as cutlery, crockery, buckets, trestle tables and a pie heater were purchased. A number of working bees were held in the six months following the fire.

High on the priority list was the establishment of a new club house and Mr George Miley was approached to determine if he would design a building. Mr Miley agreed to do so. Tree planting became a big issue, as nearly all the young trees had been destroyed along with their guards.

Mr Miley submitted a plan to a special committee meeting on July 20th 1967. If a contract for a concrete brick construction was let it could be completed in 18-20 weeks with an approximate cost of \$18,000. A timber construction would cost \$16,400 approximately. Mr Miley agreed to finish his drawings and prepare plans and specifications for a concrete block construction.

At a meeting held on December 18th 1967 Mr Miley recommended that a tender submitted by B. Geard & Co. for \$12,775 be accepted. The committee agreed to the recommendation and a contract was to be drawn up with Mr Miley to attend to all matters in connection with the contract. The 1968 season was to commence on Saturday April 8th. The AGM was held at the Cambridge Hall on Monday 18th March 1968. Members were informed of matters pertaining to the construction of the new club house and although some delay had been experienced it was now underway. Completion was expected by the end of May.

The water reticulation scheme had been delayed mainly because of problems encountered following the fire. At a working bee on May 5th 1968, the first stage was laid from the main to the club house. On June 23rd a further 1,050 ft of pipe together with fittings was installed to provide water to the 2nd, 5th, 6th and 9th greens. The new club house was used for the first time on June 29th 1968 and proved quite satisfactory for our requirements.

Earlier in the year Mr L. Briant had taken up the position of green keeper under the supervision of Mr Bill Reynolds. Four teams represented the club in the 1968 country pennant competition with our No. 3 Team winning Division 7 of the series.

Tables and chairs were purchased for the new club house, the associates providing most of the funds needed. As from October 21st 1968 it was decided to revert to the club house for meetings, which had been held at the Cambridge Hotel since February 1967. Mr P.J. Ward, the hotel proprietor, had made a room available for the meetings but it was decided it was now more practicable to hold them at the new club house.

1969-1971

The 1969 year was an excellent one for the club. Following several dry years, good rains early in the year greatly improved the fairways. The greens were in excellent condition and competitions were played to the end of December for the first time.

Early in the year, new steps to the club house landing along with a rear porch and a secretary's office were added. More tables and chairs were purchased and sufficient seating was available for most occasions. Fields for the Saturday competitions were the highest ever, averaging about 50. The veterans championship and the Webb Memorial event were introduced to the calendar. At the end of 1969 there were 148 members and 90 associates, along with 38 juniors and sub-juniors. During the year the social committee was increasingly active and the funds that were raised were a major addition to the club's income.

The 1970 season (1.3.70 to 28.2.71) again saw good playing conditions all the year round. The social committee was again very active with two successful social evenings being held. Our No. 1 team won Division 3 of the country pennant. We also fielded teams in Divisions 5 and 7.

During the year Kevin Connor organized a meeting at his residence with Messrs Ron Edwards, Charles Brown and Kevin Cleaver. Mr Connor put the proposition that we should obtain exclusive rights of tenancy by way of a new lease of the course. This lease should

allow the removal of the fences from around the greens and that stock should no longer be grazed on the course. Naturally, an increase in rental would ensue.

Subsequently the new lease, to come into force from March 1st 1971, was negotiated with the Reynolds Brothers who were most gracious during the negotiations.

NOW - A REAL GOLF COURSE

The playing conditions throughout 1971 were by far the best ever experienced by the club. With the early removal of the stock, and the fences from around the greens (almost overnight), Pittwater could finally be called a golf course. Good seasonal rains assisted with the rapid improvement of the fairways and the tees and greens were maintained to a high standard. Several hundred trees and shrubs were planted during the year to eventually tighten the course and to enhance its appearance.

During the year \$1,700 was spent on a tractor and a new gang mower in order to mow the fairways, a job largely done previously by Bill Reynolds' prize polworths. This capital expenditure had been plainly foreseen. Continual cutting of the fairways ensured their consolidation and teeing areas were further improved, while bunkers were established at the 1st green. Discussions were held on a proposal to extend the main room of the club house. Four teams were entered in the pennant competition with our 2nd team winning Division 6.

The annual Legacy Day tournament continued to be a season highlight, with \$165 being handed to the Legacy appeal fund. In December 1971 membership had reached its highest level and was closed for men but remained open for ladies. Subscriptions in 1971 were: members \$20 and associates \$11.

ASSOCIATES - LADIES

So far in this history most of the activities referred to have been those in the province of the general committee. Now, by way of a break, our attention will be centred on the valuable input to the club's development made by the associates.

Many of the furnishings and equipment for the club house were purchased by the associates from funds they raised by their own efforts. These items have included a refrigerator, gas heater, warming oven, change room carpeting, ceramic tiles, carpeting in the main room, blinds, ceiling fans and chairs, etc, etc, etc.

The following is a chronicle put together by Dorothy Reynolds of some of the associates' activities over the past 50 years dealt with in this history.

1951-1958: The very few associates played on Saturdays in members' competitions - happy social days followed by afternoon tea provided by the ladies. In November 1957 a meeting was called to discuss affiliation with the Tasmanian Ladies Golf Union. There were not enough associates to form a full committee at the time but 3 office-bearers were nominated for the positions required by the Union. These were: President - Mrs Greta Lovell, Captain - Mrs Dorothy Hunt, Secretary/Treasurer - Mrs Dorothy Reynolds. Miss Grace Barclay, Secretary of the T.L.G.U. and the scratch score committee visited the club to measure the holes and assess the standard scratch score for the course.

Affiliation was granted in 1958. A system of club handicapping was used for competitions - players handicaps being reduced by 1 stroke for each competition win, and Union handicaps were used for all T.L.G.U. events. Club handicaps were abolished in 1973.

The years between 1958-1962 saw an increase in membership and Wednesday was nominated as the associates competition day.

During this time they embarked on a fundraising campaign to raise money for furnishing the new club house which was being built by volunteer members.

1961: The Associates' Reynolds Trophy, donated by Mrs M.R. Reynolds for handicap match play, was to be played under the same rules and conditions as the equivalent Members' Trophy.

1962: An indication of the increase in membership was an attendance of 17 associates at the AGM in 1962.

1964: A vote was taken in favour of playing 18 holes before lunch. In earlier years, 9 holes were played, then lunch, followed by the second 9 holes.

1964: On February 12th 1964, Mrs Greta Lovell called a meeting to discuss the formation of a country pennant competition for the south-eastern districts. A roster was drawn up of teams from Richmond, Orford, Tea Tree, Colebrook and Pittwater with Orford and Pittwater fielding 2 teams. Home and away games of handicap match play – 2 points for a win, 1 point for halved matches. The team with most points at the end of each season to receive a suitably engraved pennant.

Pittwater No. 2 team were the winners of the first S.E.G.A. pennant in 1964. In the early years golf balls were given as prizes but in later years, members of the committee were nominated to buy trophies which were presented monthly.

1965: A roster was drawn up for cleaning the club house after golf on Wednesdays. This continued for many years and in 1979, a cleaner was employed part time, part of the cost being provided by the members.

1965: Founders Trophy was donated by Greta Lovell, Dorothy Hunt, Joyce Ellis and Dorothy Reynolds. It was a silver tray for 2 x 18 holes competition over two consecutive Wednesdays.

1966: Associates permitted the use of the 1st tee for Sunday competitions between 11.45am - 12.15pm.

1966: Foursomes Championship held for the first time.

1967: Following the February 7th fires, which destroyed the club house and made the course unplayable, several southern clubs offered their courses to associates to run their own competitions. Offers were received from Royal Hobart, Lindisfarne and Tea Tree Clubs. Competitions were played at Royal Hobart until May. Play recommenced at Pittwater on May 10th 1967. A trophy was presented to the Royal Hobart associates in appreciation and gratitude for their generous offer.

1968: Associates' first committee meeting in the new club house was held on 3rd July 1968.

1969: Letter sent to members requesting permission to wear slacks in bad weather. This was initially refused, but later granted in August 1970 for Wednesdays only. The first of many successful Melbourne Cup luncheons was held in November 1969.

1972: Foursomes Championship first mentioned on Honour Board.

1974: Tee markers for ladies' tees made by Mr C. Brown and purchased by associates at a very reasonable price.

1974: A memorial trophy was donated by the Reynolds family in memory of their late mother. This replaced the M.R. Reynolds trophy which she had donated in 1961.

1975: Gift vouchers were purchased to replace trophies for major events only, but later presented for all weekly competitions.

1975: Summer Cup donated by Joan Riley for 18 holes open stroke competition.

1975: Consistency Trophy donated by Direne Parker (a silver rose bowl).

1975: Following the collapse of the Tasman Bridge the associates from the western shore travelled by ferry to Bellerive and were picked up and brought to Pittwater by the eastern shore ladies. This co-operation enabled the club to still function strongly and was much appreciated.

1976: The position of Secretary/Treasurer was separated. The first treasurer was Jenny Hardinge who held the position for 6 consecutive years.

1979: A yearly eclectic board was made by Mr Charlie Brown and donated by Joan Brown in memory of our first associate life member, Greta Lovell.

1979: Appreciation Day was held for the first time when members of the committee were entertained and the day's competition was organised by all associates not on the committee.

1980: Pittwater fielded one team only in the S.E.G.A. Pennant and won the final at Tea Tree, defeating Orford 4/3.

1985: The Jenny Hardinge Memorial, donated by the Hardinge family, was first played for. Competition was 3 stableford rounds – best two rounds to count.

1991-92: Match play trophy donated by Laura Edwards to be named the Paussie Trophy – a derivation of Pom-Aussie. Laura was from England but spent several months in Tasmania every year and

enjoyed many days playing golf at Pittwater. The trophy is a beautiful blue-grey Wedgwood urn much admired by all.

1992: A large photo album was purchased by the committee to provide a pictorial record of the history of the club.

1995: Prime Minister Paul Keating paid a visit to the club and inspected Orielton Lagoon. The associates catered for 100 adults and 30 children on the day. During the last 40+ years, associates have catered for many functions, including Christmas dinners, veterans days, council dinners, club socials, charity days for cancer research, members and associates pennant days, officials days and for country week tournaments.

1997: Honour Board of associate office-bearers from 1957 to 2000 was made by Mr Bill Schilling and hung in the club house. Research for this was done by Dorothy Reynolds and Dencel Mapley. Invitations were sent to early office-bearers to attend an afternoon tea in November so that they could view the new board; a most enjoyable afternoon with much reminiscing of years past.

1997: New chairs were purchased at a cost of \$9,000+ with \$6,000+ being provided by associates and the remainder by the members. The bulk of this money was raised from catering on veterans' association golf days.

1998: A gala golf day organized by Shirley Thurley was held on January 29th to raise funds for alterations to ladies' cloak room.

1999: Alterations to rest room completed with members providing voluntary labour, paint and electrical work. New hand basins and carpet were provided by associates.

2000: Furnishing of the cloak room was completed. Pittwater team won the S.E.G.A. Greta Lovell memorial shield for the first time since 1980, defeating Richmond at the Tea Tree course.

1972-1978

Now let us return to the overall club activities and development. During 1972 membership remained closed for the whole year for men but remained open for ladies. The club continued to field 4 teams in the country pennant and our No. 3 team was successful in Division 9. The Legacy Day tournament continued to be a successful annual event. A donation of \$150 was handed over to the Legacy appeal.

Dry conditions prevailed during most of the year and as a consequence the fairways were only in reasonable condition. It must be remembered that we were still subject to the elements for fairway conditions. The greens and tees were maintained in good order with the water being laid on to them. Two social evenings were held and the dinner held in the club house was well attended.

Bill Reynolds continued his role in managing the maintenance and further improvements to the course. During the year Mr L. Briant, the part time green keeper, resigned from the position. Income for the year was \$9,125.

The 1973 year was another successful one for the club in terms of golfing conditions. Our profit on Legacy Day was \$280, which as usual was forwarded to the Legacy appeal. Officials Day was again a highlight with a capacity field taking part in the competition. Membership remained closed for most of the year for members, with a waiting list being maintained.

The social committee was again active while the associates organized another successful dinner as a fundraising function. More trees and shrubs were planted during the year. The ladies continued to assist on pennant days and their continued help in this regard was greatly appreciated.

Income for the 1973 year was \$10,378. Subscriptions were \$25 for men and \$12 for ladies. An average field for Saturday competitions was 50 while an open tournament attracted 75 players.

In 1974 continued wet weather resulted in many courses in Southern Tasmania being closed for varying periods. Pittwater did not have to resort to closure, demonstrating that it was (and still is) an excellent wet weather course.

The 1975 year was affected by the Tasman Bridge disaster with a reduction in the size of competition fields. The social committee continued their fundraising activities and Bill Reynolds continued to manage the course for the benefit of members, although in this year he was not helped by being unable to engage a satisfactory green-keeper. A decision was made to proceed with extensions to the club house after completing an addition to the machinery shed.

The 1976 year saw the extension of normal competitions into the summer months. Improvements to the course continued to be made with particular emphasis on the enlarging of the 3rd green. The machinery shed additions were completed and new course equipment purchased in this year and the previous year enabled the general condition of the course to be further upgraded and the trees were growing noticeably.

The 1977 year saw another milestone in the club's development. On May 2nd 1977 the committee decided to proceed with the club house extensions, i.e. to extend the main room floor and make provision for a room underneath. George Miley agreed to assist with plans and supervise the work.

Preliminary discussions on the prospect of obtaining a liquor licence in the near future were held. It was acknowledged that this would require further extensive alterations and additions to the club house interior, the establishment of bar and cool room areas, as well as dispensing equipment. Work on the extensions to the main room

continued with George Miley providing the committee with progressive reports. Preparation work was done by club members at working bees. The interior work was completed towards the end of 1977 with the painting being undertaken by club members. The associates provided most of the funds required to carpet the whole floor area of the enlarged social room. Kevin Hardinge provided his expertise with all the electrical installations. Subscriptions for 1977 were: men \$40, ladies \$20.

The 1978 year was a good one in all aspects. Two of our four teams won their divisions in the country pennant competition. The Legacy tournament was a highly successful event with \$530 being forwarded to Legacy. Membership was maintained at a high level with competition fields being larger than previous seasons. Final payment was made in respect of the club house extensions. Income for the year was \$28,800. The finance statements showed an operating surplus for the year of \$4,800. The club was free of debt with an accumulated funds balance of \$40,000.

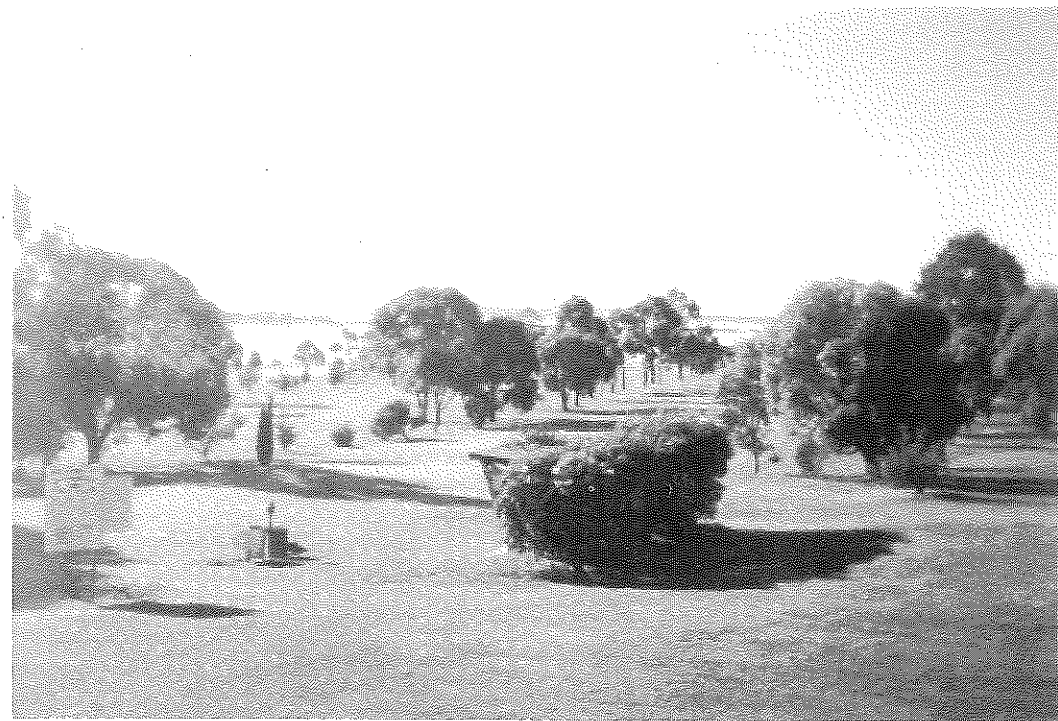
Tuesday competitions were introduced and were initially conducted by Bill Littlejohn and Clem Clifford. Plans and specifications were provided by George Miley for the club house alterations to allow for a bar and kitchen extensions. This project would evolve slowly because of the need to comply with the requirements of the various authorities - Health Department, Fire Department, Licensing Court, etc, etc.

Throughout the 1970s the success of the tree planting programmes can be attributed in no small measure to the efforts of Len Brown. His constant attention to the watering of the young trees was a dedicated task and Len's efforts in nurturing the newly planted trees were invaluable.

1979 - 1987

During 1979 a principal development activity was the establishment of the bar and associated facilities. Graeme Tilyard worked full time on the project from its commencement. However, a lot of Graeme's







work was done on a voluntary basis. Club members also provided a lot of volunteer labour, thus providing considerable cost savings. None the least of this "free" work was provided by Kevin Hardinge (electrical wiring, etc) and Peter Hardinge (refrigeration installation). On the course, the 4th green and surrounds were upgraded and a further programme of tree planting was put in place.

Wednesday Twilight Competitions during the "daylight saving" period continued, having begun in 1977-78. A private loan of \$30,000 was obtained to finance the new bar installations. The social committee continued to be very active and their fundraising activities were eminently successful. Robert Munro commenced duties as greenkeeper on August 13th 1979, this being the first full time appointment to the position.

One of the requirements of the liquor licence being granted was the provision of a sealed car park and this work was carried out early in 1980. The cost of the completed club house extensions including bar equipment and fittings was \$46,700. Murray Munro accepted the position of bar manager and thus became responsible for controlling the operation of this facility. The licence was granted from June 7th 1980 with Murray being the licensee. At this point let it be placed on record the tremendous amount of time spent by Murray in handling all administrative matters pertaining to the granting of the licence. A social night to officially open the new extensions was held on August 9th 1980.

In the 1980 pennant series three of our four teams won their divisions. The Legacy appeal received \$510, which was raised during the annual Legacy Tournament.

The 9th green was reconstructed and the surrounds upgraded, a temporary green being used for a short period. Some sections of the fairways had been damaged by successive dry years and following advice from the Department of Agriculture it was decided to plough up some areas and leave them in fallow for a period before resowing.

Bar trading from 7.6.80 to 28.2.81 resulted in a profit of \$11,900. On the 6th February 1980 the committee decided to have a telephone installed in the club house. "Wow" – now there's a progressive step! The 1980 subscriptions were: men \$65, ladies \$35.

The 1981 year was very successful financially. Bar profit for the 10 months March to December amounted to \$13,300 and this result enabled the club to reduce the private loan by \$10,000. N.B.: At this point the club "year" was amended to a calendar year.

During the year an extensive programme of course improvements was undertaken. This included the reforming of the 6th green, new tees on the 4th and 8th holes and the levelling of some parts of the surrounds to the 2nd, 3rd and 7th greens to provide better drainage. A section of the 9th fairway was ploughed and resown. A new ride-on greens mower was purchased during the year and its use resulted in improved conditions of the greens. The nine-hole competition on Saturdays prior to the pennant games did not attract the support the committee hoped it would.

The 1982 year was also regarded as being successful. A further \$10,000 was paid off the private loan. Capital expenditure included the purchase of a diesel tractor and an extra water meter and piping, required to irrigate the southern section of the course. This latter project came into operation towards the end of the year, although the absence of worthwhile spring rains did not help. In fact drought conditions were experienced throughout the year and most of the work aimed at improving the fairway conditions was seriously negated. However the trees continued to thrive.

The club continued to field four teams in the country pennant competition and our 2nd team was successful in Division 5. The annual Legacy Tournament was a highlight of the year. During 1982 it was deemed necessary to close membership. Subscriptions were: men \$100 plus capitation fee, ladies \$60 plus capitation fee.

In 1983 the course was in excellent condition. Seeding and fertilizing was followed by good rains (a change of luck) resulting in heavy growth in the "rough". This placed a heavy load on the greenkeeper. The course improvements undertaken were the reconstruction of the 5th green and the ladies' 5th tee. Two more mobile sprinklers were purchased and with the laying of extra piping, the whole course was able to receive some watering. We were still dependent of course on good rainfalls. During 1983 the final \$10,000 owing on the private loan was repaid.

In 1984 the course condition was again good. Improvements included extensions to the 3rd green. In the 1984-85 summer period it was not necessary to impose "tee-up" conditions on the fairways as had been the case in previous years. Our pennant teams did not meet with success. The bar trading result was highly satisfactory and at the end of the year our accumulated funds balance stood at \$121,500. Compare that figure with \$40,000 at the end of the 1978 year and you can see how the club had been strengthened in the intervening period.

It seems that in every year reviewed so far there was some course maintenance, improvements or alterations in train. Have you ever visited a golf course when there was not some activity of this nature being worked on? Of course you haven't! Such are the requirements of golf course management.

In 1985 the format of the country pennant competition had been the subject of some discussion by participating clubs. More later.

A good rainfall pattern during 1985 meant that playing conditions remained good well into the summer period. Course improvements in this year included the completion of the 3rd green extensions and the grading and sowing of the "slope" at the back of the 6th green, a project largely carried out by Bill Reynolds. The Tuesday open competitions "took off" and have continued to provide well supported organized golf for members and visitors ever since.

Competition fields were slightly down in numbers but all major events were well supported. An important change to our administrative structure occurred during 1985, in that the Pittwater Golf Club was registered as an incorporated body under the Associations Incorporation Act. The principal effect of incorporation is to place the members under the protection of the act, including limiting the liability of members in the event of a winding up. The constitution of the club was registered under the act in accordance with the model rules for incorporated associations with modifications. The constitution cannot be altered without the approval of the statutory authority. The requirements of the act meant the club had to change its auditors. Cox, Miller & Robinson, Chartered Accountants, were appointed to this role.

The 1986 season was a successful one with good playing conditions prevailing throughout the year. The protracted task of enlarging the 6th green was finally completed. A start was made on the installation of an automatic watering system with pop-up sprinklers being introduced to the 8th and 9th tees.

Robert Munro who had been greenkeeper for 7 years resigned and Barry Holman was appointed to the position. For some years George Palmer had rendered valuable assistance on the course and during 1986 his efforts were incalculable. A fuel shed to store petrol and other inflammables was erected during the year with Bill Schilling and Keith Cooper contributing their time to the construction.

The financial aspects of the club's activities were again highlighted with an amount in excess of \$52,000 being held in term deposits at the end of the year. Our pennant teams again failed to figure among the divisional winners, thus continuing the club's lack of success since 1983.

During 1987 the principal improvement on the course was the raising of the 6th tee, a project carried out by Bill Reynolds and helpers. During this year the new 17th tee for men was brought into use.

Capital expenditure was required to replace several items of equipment and the purchase of a coring machine and a utility vehicle. Our pennant teams were again unsuccessful. The annual Legacy Tournament principally organized by Murray Munro resulted in an amount of \$564 being forwarded to the Legacy Appeal. Playing conditions were generally good throughout the year with late spring rains helping to maintain these good conditions well into the summer.

1988-1992

1988 was an outstanding year in the history of the Pittwater Golf Club. The club acquired a 50% ownership of the course, this action providing added security for the future of the club. Further equipment for the automatic watering of the tees and greens was purchased. The cost of water from the mains supply rose dramatically at this time and an increase in club subscriptions was necessary.

During the year a fairways mower unit was purchased at a cost of \$25,000. A new members tee was completed close to the boundary fence for the 4th hole, thus providing further variation to the course. Greenkeeper Barry Holman was given continued valuable voluntary assistance by Keith Cooper, Bill Schilling, George Palmer and, of course, the indefatigable Bill Reynolds, to ensure the playing conditions were top class. And, would you believe, two of our pennant teams were winners in 1988. These teams competed in Divisions 9 & 12 and were captained by Alby Williams and Geoff Oates.

Membership at the end of the year comprised 273 men and 96 ladies (plus junior and sub-juniors). Membership for men had been closed during the year. And here is an item of significance - Denis Stephens in his first year as the club's chief executive officer (otherwise known as Secretary) organized and conducted a successful raffle, the

proceeds from which were used in the purchase of a computer for the club. *A real upmarket move!*

The 1989 year was highly successful both financially and with the presentation of the course. Despite some capital expenditure and increasing maintenance costs on machinery, together with \$4,000 spent on sealing the road to the club house, cash reserves increased by \$22,000. Subscriptions for 1989 were: men \$150, ladies \$95. During the year Bill Schilling constructed seats at the 1st, 2nd, 3rd and 8th tees. The donation to the Legacy appeal continued its annual upward spiral, with \$772 being handed over as a result of another successful day. The ladies' tee on the 8th was moved from within the hazard to the front of the members right hand tee.

At the club's annual meeting held on February 27th 1989 the question of the club's future participation in the country pennant competition was discussed at length. This arose because of some problems with the competition format. A vote of members decided against taking part under the current arrangements. Consequently the club withdrew from the competition. What a pity! Just as the club started winning again. (More later).

In 1990 the club enjoyed another year of good progress with course upgrading. It was decided to proceed with a new fully automatic fairway watering system and \$25,000 worth of pipes and fittings were purchased for installation on the course. Other items of a capital nature obtained during the year were a trenching machine, sprayer unit, super spreader and a welding kit. Grass pavers costing \$1,800 were used to improve the entrance to the club house. During the year the 2nd green was lifted and relaid. This was a major undertaking with a lot of the work being done at working bees.

A new brick flower box appeared at the entrance to the course courtesy of Ken Griffiths. Earlier Rodney Crane had "bricked up" a similar box near the club house steps.

Club handicaps were computerized during the year. This meant a great saving in time. Barry Stephens used his expertise in programming the necessary system. It became noticeable that work was being carried out on a spit of land near the 6th tee. Stay tuned!

The design of the new fairway watering system would provide for the installation of 180 sprinkler heads throughout the course. The new system was designed to operate independently of the tees and greens system already in use.

1991 was another busy year. The course was almost back to normal after the trenching machine had wreaked havoc to parts of it. Members should always be mindful of the amount of time Murray Munro spent in connection with the new automatic watering scheme.

It was during this year that the club began negotiating with the Sorell Council for the club to be supplied with treated water from the Sorell/Midway Point sewerage schemes. Yes, it is the year 1991 we are talking about. Two large tanks were acquired to hold the water for distribution to the new system and a pump enclosure was constructed. Bill Schilling was again prominent in this installation. A. Jacobson Greens mower was purchased at a cost of \$26,000. The Syd Johnson memorial event (Canadian foursome) was introduced to the playing calendar in 1991, the Johnson family providing a substantial perpetual trophy.

1992 saw the fairway watering system up and running (flowing?). A few problems arose initially but all in all it operated splendidly and this was reflected in the further improvement to playing conditions. Memberships remained at capacity while another good year was experienced financially. Developments included the provision of course shelters and a practice net area. Bill Schilling again! An extension to the rear of the club house incorporated a receiving room for bar supplies and a store room for multiple use. Bar trading provided a profit of \$25,600. The annual water bill was \$24,500.

Cash reserves at the end of the year stood at \$24,000. Subscriptions for 1992 were: men \$180, ladies \$105.

1993 - 2000

As we near the end of the general section of this valiant attempt at history, it becomes obvious that events of interest will be known to nearly all current members. However, new and future members and others may find interest in some of the activities, etc recorded from hereon in.

During 1993 the course continued to improve with greenkeeper Barry Holman often having to work under difficult conditions as the course was almost constantly in daily use. The new 15th members' tee was officially put into use during an Ambrose event held on July 3rd 1993. This club event followed the playing of the Reynolds trophy final for the year. It was fitting that Bill Reynolds, the designer, architect, engineer and builder of the tee, played the first shot therefrom. Nice touch that! It had been an intriguing pastime for members watching the new tee being formed over several years. Fittingly the area was designated Reynolds Point and a sign indicating this was provided by Kevin Connor and Bill Schilling.

Coring and sanding the greens had become a biannual job and this work was always carried out by volunteers (mostly old blokes). The car park was extended and the new storeroom extensions was completed, with further work by Bill Schilling and Rob McGinniss. \$6,000 was spent on improvements to the water reticulation pumping facility.

In December 1993 South Eastern Australia experienced heavy unseasonal rains. Water flowing from the Orielson Rivulet into the Lagoon, coupled with the fact that the outlets at the Sorell causeway had been all but closed because of road works, caused flooding of that part of the course along the foreshore. Some excellent

photographs of the flood waters taken by Bill Reynolds can be seen in the associates' photo album.

During the 1994 year new associates' tees at the 15th and 17th were placed into use. These new areas were established by Bill Reynolds. The new tee at the 15th was really part of the Reynolds Point project.

Problems were encountered with the automatic watering system and it was envisaged that some design corrections would be necessary to achieve efficiency in the course coverage. Travel sprinklers were brought back into service to keep some parts of the fairways in good order while the main system was not fully effective.

Terry Burr, Keith Cooper, Bill Schilling and that master of the chainsaw, George Palmer, were regularly on hand to render valuable assistance on the course maintenance scene. The main items of expenditure during 1994 included a security system, computer equipment, photocopier, television and change room carpeting. Maintenance of machinery, repairs to the entrance road, painting of the club house and construction of pathways required expenditure of \$13,000. The water bill was \$25,600.

The committee had earmarked 1995 to be a year of financial consolidation, however some items of expenditure upset that plan a little. Additional watering costs to combat the dry period and the cost of modifications to the watering system contributed to running costs while our annual water bill was \$40,500.

In January 1995 Barry Holman, who had been our greenkeeper since 1986, resigned from the position and John Hiller was appointed in his place. Discussions on the "treated" water supply were ongoing with the club well positioned to be able to "connect up" in the first phase of the scheme. But some things do move slowly.

An amount of \$1,082 was handed over to the Legacy appeal as a result of another successful day.

The principal development in 1996 was the erection of a new and more substantial machinery shed – a very much overdue development. The new shed of about 200 square metres provided necessary protection for our valuable equipment as well as more room for maintenance work. But wait! Toilet facilities were not included in the new construction. Whatever happened to that toilet facility often referred to in the early pages of the club's history? We should have kept it and put it into use again! Total cost of the machinery shed was in the vicinity of \$30,000 (without toilet!). Kevin Hardinge provided his time with the electrical wiring, etc for the new shed.

Water costs were down considerably from the previous year. A new "front end" mower was purchased at a cost of \$7,500. The much vaunted treated water scheme had stalled because of a change in the Federal Treasury benches. Road works on the course were undertaken to provide access to the new machinery shed without vehicle encroachment on the course proper. This required the re-positioning of the fence from the club house to the new shed. The cost of this job was minimal due to some materials being donated and committeeman Bernie Dean loaning a road grader. An operating surplus of \$16,800 was achieved for the 1996 year.

In 1997 the Pittwater Golf Club returned to the country pennant competition. This came about because of a change in the competition rules. A condition of the club's re-entry was that our members not involved in the inter-club series would be able to play a normal 18 hole competition before the pennant matches. Our no. 1 team was successful in Division 2. A conspicuous return!

During the 1997 year new 3rd and 11th tees were brought into use. Valuable voluntary contributions, time-wise, were made by Denis Stephens and Neil Johnson to make them operational. Difficulty was experienced in maintaining some of our greens to acceptable standards and temporary greens were used for a period in some instances, while recovery work was carried out. Principal items of

expenditure were the purchase of new club house chairs (with major financial assistance from the associates), a brushcutter, boom sprayer and a trailing gang mower. Our cash reserves at the end of 1997 stood at \$33,000.

During 1998 the committee paid regard to the continual improvement of the greens as well as making sure the fairways were maintained in the best order possible. Planning commenced for the building of the dam to hold the treated water when it finally became available.

Glenn Boxall, who took up the position of greenkeeper in November 1997, can be thanked for the excellent presentation of the course. Glenn was supported by Ian Heather, Terry Burr, Kevin Hardinge, Murray Munro and Bill Reynolds in his initial year of settling in. The club house surrounds were enhanced by the planting and maintenance of garden beds including those around the old machinery shed, now used as an external storage area. Margaret Stephens carried out this work and she deserves high praise for her efforts. Our cash reserves continued to build up in preparation no doubt for the oncoming new water supply program. Must be getting close now!

During 1999 the course remained in excellent condition with the greens maintained to a high standard. Glenn Boxall continued his hard work around the course and he again received support from his regular helpers. It was pleasing to note the work on the new water system for the Penna area. Pipes from the treatment works at Sorell and Midway Point were conjoined near our 6th/15th tees and then laid around the lagoon boundary to near the 4th tees and thence across to the settling ponds in the area on the western side of Penna Road. Getting closer now!

As is usual with developments of this nature, regulations and restrictions as to the use of the treated water can be very frustrating. This project proved no exception. Even after the water flows into

our dam a lot of expense will be incurred in conveying it to our fairways.

During the first half of the year 2000 southern parts of Tasmania experienced a very dry summer/autumn period. Rainfall was less than half the average. Because of great course management skills the course remained in excellent condition and the greens were regarded by "oldies" as better than they had ever been. Some rap that!

Surprisingly there was not sufficient interest from our members in the country pennant competition for Pittwater to field more than one team. As a result of this lack of interest the club did not take part.

Earlier in the year two bunkers were established at the 5th green.

The contractors to create the dam commenced their work on Monday July 10th 2000, completing their work in two weeks. The reputed capacity of the dam is 11 megalitres. Preparatory to water flowing into the dam a post and rail fence was erected around the dam site at a special working bee held on Saturday August 19th, 2000. This work was organized by Mark Blackley.

And that darned trench digger was at it again with deep furrows appearing on some sections of the course.

The recycled water began flowing into the dam on August 23rd 2000 and within a week it was all but full.

And the first to make use of it? That motley lot of "Pittwater" ducks! Members should be aware of the enormous amount of time spent by Neil Johnson in his role as PROJECT MANAGER for the development of the dam. Neil's professional and managerial skills were clearly evident from the start of the project right through till its successful conclusion.

This would seem a good time to conclude this history as the creation of the dam and the subsequent pumping of the recycled water throughout the course represents another major development.

This history ends 31st August 2000.

SPONSORSHIPS

In the more recent years of the club's existence we have received the benefit of various sponsorships from business organizations and others. The sponsors mentioned herein are not arranged in any particular order of importance or value.

MOTORS PTY LTD provided the trophies for a day each year over a long period.

CASCADE BREWERY sponsored a special day for many years, provided refreshments for Legacy days and a "nearest the pin" prize on Saturdays.

CUB – FOSTER'S sponsored a day with the provision of prizes between 1990 and 1997. Between 1990 and 1994 they provided a "nearest the pin" award on Saturdays.

ARNOTT BROCKOFF GUEST provided a "nearest the pin" award on Saturdays from 1989 to 1991.

ROADWAYS PTY LTD have been sponsoring a Saturday competition in February since 1990. They have been providing valuable trophies for the day's competition.

HORSESHOE INN has since 1994 sponsored a Saturday competition in January of each year, making prizes available for the day. The "Shoe" also provided a perpetual trophy competed for by Pittwater and a team representing the Horseshoe Inn.

HOBART GOLF STORE has for several years provided the prizes (with extras) for a Saturday during the September/October period.

TRENDY CUT MEATS of Sorell have since 1997 given a substantial prize for "nearest the pin" on Saturdays (men) and Wednesdays (ladies).

AUSTRALIAN LIQUOR MARKETERS PTY LTD began sponsoring one of our Tuesday competitions in 1999. They provide the prizes for the day. ALM are also currently presenting a laminated "hole in one" certificate for individuals who play the perfect shot.

J BOAG & SON BREWERY joined our list of sponsors in 1999 by donating refreshments for Legacy Day and a "nearest the pin" award on Saturdays. In addition a Boags Open Day has been incorporated into our programme.

SORELL RSL SUB-BRANCH has since 1977 given a trophy for the best score by a returned serviceman on Legacy Day, i.e. for the winner of the Athol Hunt Memorial Trophy.

LIFE MEMBERS' TROPHY DAY, which originated in 1987, features a valuable trophy for the player returning the best Stableford score of the day. This trophy together with the usual divisional prizes (plus extras) is donated by the club's male life members.

TASMANIA ASSESSING & INVESTIGATION SERVICE has since 1993 sponsored a Saturday in December, providing a host of Christmas prizes.

SORELL AGENCIES sponsored a Saturday competition in 1993.

In addition to the foregoing the following have provided sponsorship of the twilight competitions by way of "nearest the pin" prizes:

BERRIVALE ORCHARDS	1995-96
TERRY COMMANE PANEL BEATING & SPRAY PAINTING	1997-98
NORTHCITY MOTORS	1996-97
MARK BLACKLEY BUILDERS	1996-97
HARTZ INTERNATIONAL	1997-98
HEADLAMP SUPPLIES	1999-2000

LIFE MEMBERS' RECOLLECTIONS

My earliest memories of the early years of Pittwater are firstly the keenness of the few members of the club who always arrived early on Saturday mornings with their hand mowers to mow their allotted greens. The club owned very little equipment so had to rely on members to bring any gear needed. The greens were not fenced and sheep roamed all over the course. Sometimes the greens had to be swept to get rid of the manure. The fairways were never mown in the early years and sometimes we would spend more time looking for our ball than actually playing our shots.

I can recall a few lighter moments:

- One member's ball split in half during his round with one half flying out of bounds and the other half within bounds. He was left wondering how the "out of bounds" rule should be applied.
- During a mixed foursome event a player hit a ball high into a tree and the member casually climbed the tree and played the ball. This incident was reported in the Mercury Newspaper.

It has been very satisfying to watch the club go from strength to strength over the years to the stage where it is now recognized as one of the best 9-hole courses in the state.

Bill Reynolds

I became an associate member of Pittwater shortly after my marriage in 1957. I did not know anything about golf but was keen to be involved. In 1958 our few ladies held a meeting to elect office bearers so that we could join the Tasmanian Ladies Golf Union. Miss Grace Barclay, the Secretary of the TLGU, then visited the club to measure and assess the course. We were granted affiliation in 1958.

I remember being asked to write to the members (men) to ask permission to wear slacks especially in bad weather. Initially this request was refused but was later granted. Times have certainly changed as most associates wear slacks these days.

The first members' officials day was a huge success with visitors attending from most southern clubs. The ladies prepared the lunch with the hot dishes being heated on several primus stoves placed on the floor in a corner of the old workers hut, which was our club house at that time.

In the late 1950s and early 1960s we organized several fundraising activities to raise money to furnish our new club house which was being built by volunteer labour. We had progressive dinners, raffles, film and card evenings, etc. We also had a cake and produce stall on the Sorell stock sale days which were held every fortnight.

It has been a wonderful experience to be involved with the club all these years and I know that I have gained as much from the club as I have put into it.

Dorothy Reynolds

The most notable event during my membership of the Pittwater Golf Club was the decision taken to build the bar and obtain a liquor licence. The benefit that I saw at the time was that hopefully the profits derived from the bar trading would give the club the chance to accumulate funds to purchase additional machinery, purchase the course and install a complete watering system or, alternatively, to service debt if funds were borrowed for these purposes.

Project No. 1 was in fact the building of the bar including the extension of the club house and the completion of the buggy room. A loan of \$30,000 was required to complete these works with the loan being repaid over 3 years from bar profits. The purchase of a 50% interest in the land which makes up the golf course was the next

project of significance. Again the purchase was financed by moneys derived from the bar operations.

Providing an automatic watering system to the course was the next undertaking. This has provided members with course conditions they now enjoy in playing their golf. It is not all that long ago when teeing up on the fairway was often required between December and April.

Although a lot of the work required was undertaken voluntarily by club members, the advice of a consultant, purchase of pipe, fittings and sprinklers as well as the purchase of a trenching machine were required. No loans were needed as the project was paid for by money accumulated from bar profits. These projects along with the purchasing of many items of machinery are highlights of my membership and have contributed to the development of playing conditions and facilities offered by the club for the enjoyment of its membership.

Roy Paine

I recall the enjoyment of participating in the mixed event days which were held on Sundays. At the completion of the game we partook of afternoon tea, usually consisting of hot dishes and sweets. I was always made very welcome by club officials and made many lasting friendships. To become a life member was a very big honour.

I especially recall that the Pittwater associates won the South Eastern Golf Association Pennant in 1964. This was the first year of the competition. In conclusion, I remember a lady who hit five balls into the water hole at the 4th during the same game.

Marj. Palmer

I recall two humorous incidents during my long association with the Pittwater Golf Club. The first concerns an incident in the kitchen when custom had it that the ladies would arrive with their (or their spouse's) favourite casserole for later heating in the ovens at the appropriate time. Some associates would be delegated to provide a

sweet. The procedure was for a nominated person to place the casseroles, usually with foil or covering lids, in to heat prior to the field finishing for lunch. On this occasion it was discovered after the heating process that one casserole was in fact someone's favourite wine trifle which had been placed in a casserole dish instead of a sweet bowl. Subsequent reactions ranged from hysterical laughter to one scowling associate.

The second incident relates to my late husband Ron, a former club president. During a working bee Ron was involved in removing a wire netting fence from around a nuisance tree stump adjacent to the old 6th tee. A ball landing within the "stump guard" was rewarded with a free drop up until that day. Following the working bee the usual competition was held and Ron's drive from the 6th was not one of his best. It in fact landed and stayed on the stump and he was, by a very recent change in the local rules, denied a free drop because of his earlier activity during the working bee.

Marj. Edwards

In the late 70s a programme of new tree plantings was commenced. This was mainly at the instigation of then committeeman Vic Coombs who, with the advice of the Forestry Department, decided on the types of trees best suited to the various parts of the course. Trees were obtained from the Forestry Department nursery at Perth over a number of years, with the programme being finalised in 1983. Apart from the various decorative trees still flourishing, the pines at the back of the 3rd green and the trees separating the 6th and 15th fairways were planted at this time.

Also during this period new grass strains were introduced to the fairways on the advice of Ian Febey, the greenkeeper at the Claremont Golf Club. Most fairways were over-sown with the new seed while others were ploughed up half at a time and re-sown.

Neil O'May

I often look back at the times I enjoyed as an associate member of the Pittwater Golf Club. Being an associate allowed me to make so many friendships while enjoying my attempt at playing golf. However, I am despondent that I am no longer able to play but the friendships remain.

The main highlights of my playing days were reducing my handicap to under 30, being elected associates President and being granted the honour of life membership. During my term as President I was blessed with great committees and received tremendous help from both committees. Serving two years as associates Captain (1974 - 1975) was also an enjoyable period of my membership.

Dorothy Munro

Having been a member of the club since 1967 I have seen and been associated with quite a few changes. Possibly the most beneficial as far as playing conditions are concerned has been the removal of fencing both on the course and around the greens. Most present day members would not know that a fence ran across the fifth fairway and the yardstick was to attempt to reach this fence with your second shot. The greens were protected from stock by the provision of fences and these could be either an aid or hindrance upon approach.

Another of the great improvements was the installation of a fairway water scheme. Although this was not of the high standard we had anticipated it was installed with the finances available and has improved playing conditions no end. We can now enjoy playing off fairway grass for the full year and not have to resort to preferred lies or teeing up as has been the case in years gone by. No doubt the programme at present under way will improve this aspect even further.

Another improvement worthy of mention was when Bill Reynolds got rid of a lot of his white chooks. This eliminated the fact of the

third fairway being covered with feathers the same colour as golf balls, thus increasing the search time.

Possibly the highlight of my time as President was the improvements to the club house, incorporating the building of the bar. The provision of the bar and the procuring of the licence was not without a lot of hassle with various bureaucratic departments and made one wonder at times whether it was going to be worth the effort. Each Saturday morning there were working bees well attended by members and tradesmen prior to engaging in the event of the day. These volunteers can now look back at an achievement which has been of great financial assistance to the club along with the social atmosphere it has generated.

Being involved with the club for so long has involved the noting of quite a number of humorous incidents. A former treasurer arrived home after winning a major trophy with a tray out of the oven which had been substituted for the prize.

Playing pennant one day at a nearby course one of our team members went to remove the flag at the first hole only to be told that if he did his opponent would claim the hole. After resting on his bag for a time he was told that he could remove the flag. His reply was to the effect that if he wanted it out he could do it himself. I imagine that not a lot of friendly dialogue existed for the rest of the round. Can't remember whether Bill Cooper won the game or not. For humour you only have to throw 200 or so members from various walks of life and different senses of humour together and you can then sit back and enjoy the outcome.

My advice to anyone, particularly younger members, is to become involved in the running of the club. You will get a lot of satisfaction from it and can look back in a few years time and say you helped with happenings at a great club.

Murray Munro

On my retirement I moved to Sorell and was accepted s a member of the Pittwater Golf Club in December 1984. In 1986 I was elected Club Captain and continued in that position for 13 consecutive years. I believe I was the first retired person to accept the position, thus being able to devote more time to the duties of Club Captain.

At that time I formed the opinion that there was a certain laxity in the dress standards of some of those who were using the club facilities. Checks were carried out and in the first one there were 13 visitors using the course and it was found that 11 had not paid green fees. After further checks green fee receipts improved. It became apparent that supervision was affective not only in the collection of green fees but in ensuring that visiting players were members of affiliated clubs.

Dress standards were displayed prominently at the entrance to the course and at the first tee. Of course these dress standards not only applied to visitors but to our own members. I remember that on one occasion on a hot Saturday a member turned up to play in the competition but his shorts and socks did not comply with club rules. He played in the competition wearing wet weather gear to cover the offending attire. Being firm in our approach to this matter has paid dividends and our standards are known and accepted by the golfing fraternity.

As our competition fields increased the convention of turning up at about 11am to play became unworkable. After some trial and error, a workable timesheet was devised and this has worked in a satisfactory manner. During my early years at the club I obtained some 400 trees at no cost through forestry greening programmes and planted them around the course. Some did not survive but there are still many blackwoods, silver wattles, flowering gums and other small decorative trees that have flourished, adding to the picturesque nature of the course.

There have been many projects during my relatively short span of membership in which I have been involved. These include coring and sanding greens, building tees, pegging hazards and defining out of bounds, etc. I thoroughly enjoyed participating in these projects.

Alby Williams

I joined the Pittwater Golf Club in 1966 when there were fences around the greens to keep the sheep away. Since then there have been many changes and improvements with the fences being removed, greens rebuilt, alternate tees on many holes and automatic watering of tees, greens and fairways. All this was of major benefit as it had been the necessary custom for all shots to be teed up during the summer months. Another project was the planting of 100s of trees to enhance the layout of the fairways.

After the club house was destroyed in the 1967 bushfires a new club house was built with later additions being the enlarging of the main room, and later extensions being the establishment of the bar area together with a larger kitchen and change room areas. Most of the work on the extensions was done by voluntary labour.

The Pittwater Golf Club has been a major part of my life for over 30 years, having served on the committee for a total of 22 years including being Captain and President in that period. When I came to Pittwater we used to bring our drinks and put them in the refrigerator for later as it was not till 1980 that bar facilities were established.

Congratulations to the Pittwater Golf Club on its 50th Anniversary and to all members and associates past and present who have helped to make the club a success. I wish Pittwater all the best in the future.

Kevin Hardinge

Having been a member of the Pittwater Golf Club since 1958 I have been privileged to see the various stages of the club's development

and I hope that I have played some part in the club's steady progress. In my opinion the most important stage of that progress was achieved in early 1971 when, as a consequence of new leasing arrangements with the course owners, the fences were removed from around the greens. This was possible because under the new lease livestock would no longer be grazed on the course. This was a turning point in the development of the course. A programme of enlarging and reforming most of the greens was gradually put in place while teeing areas were also expanded.

The Pittwater Golf Club's progress over 50 years has been a story of success. In my opinion this success can be attributed to the good management of the club which has always prevailed.

Kevin Connor

This little story recounts an incident I was fortunate to witness while playing in a Saturday competition some years ago. At that time there were very few trees on the course and those that were there were protected by tree guards. If when playing the 9th hole, you hit your ball to the right, it could end up on the 1st fairway with an ideal shot to the 9th green. The rules of golf were that when dropping a ball you had to face the direction of your intended shot and drop the ball over your shoulder so that you could not see it fall to the ground.

The story involves Len Wickham, a character around the club for many years, and Murray Munro. The story typifies one of the reasons why the Pittwater Golf Club has been such a successful club over so many years. By this I mean that within the club, whilst playing the game of golf with a competitive attitude, there is still opportunities for fun and humour which adds to the enjoyment of the game and the character of the club.

Len was playing the 1st hole and had hit his ball into the rough between the 9th and 1st fairways. The ball had come to rest near a

tree guard, requiring him to take a drop. This Len was doing as Murray, who was playing the 9th, was walking to his ball which he had hit out onto the 1st fairway. As Len was dropping his ball over his shoulder Murray was walking past and quick as a flash stuck out a hand and caught the ball as it dropped, putting it in his pocket. Murray then continued walking as though nothing had happened. A few metres further on he looked back to see Len with a puzzled look on his face, searching for his ball. After a suitable length of time all was revealed, with much laughter, and the incident was taken with good humour.

Ken Ring

A golfer was annoyed that his caddie was taking too long finding the right club. "Come on boy, you must be the worst caddie on earth!" "I doubt it sir", said the caddie. "That would be too much of a coincidence!"

Golf is a game in which you fork out a thousand bucks for a set of clubs and then spend every weekend trying to use them as little as possible.

Man blames fate for other accidents but feels personally responsible when he makes a hole in one!

CLUB HONOUR ROLLS

There did not appear to be any reason to include in this history copious lists of club office bearers, championships and other special events winners. These are all prominently displayed in the club house on our excellent honour boards.

It would be an injustice if it was not placed on record that Charlie Brown provided nearly all the honour boards which the club possesses. Charlie's contribution to this aspect of the club is incalculable. Since 1987 Neil O'May has updated the honour boards on a yearly basis.

It would be opportune to list those people who have handled the duties of bar managers since the inception of that facility:

Murray Munro	1980-1984 & 1997
Barry F King	1985-1986 and 1999-2000
Lindsay Munro	1987-1989
Syd Johnson	1990
Barry Stephens	1991-1992
Frank Evans	1993-1994
Ian Heather	1995-1996 and 1998

FROGMORE

In 1820 the area of land which became known as the Frogmore Estate was granted to Charles Jeffries, a former Royal Navy Officer. It was he who gave the area its name. The original house was destroyed by fire but another was built in the "orchard" area just to the left of the entrance to the course. However it had not been really completed when Mr Jeffries, who had not prospered as a farmer, died in 1826. He was buried at Sorell. The house was once known as Frogmore Castle and remained in use till being destroyed in the 1967 fires.

Did you know?

- Rainwater collected from the club house roof is piped into Frogmore Lake – organized by Bill Reynolds.
- For the first time in living memory the small pond at the 8th tee was dry in the first half of 2000.
- In 1973 the Orierton Lagoon was declared a protected area at the instigation of the Pittwater Golf Club and others. In 1995 it was declared a nature reserve.
- "Mashie" was the old term given to the no. 5 iron. It was derived from the French word "masse", the same term used today to describe the backspin put on a billiard ball.

ACKNOWLEDGMENTS

Sincere thanks: to Bill and Dorothy Reynolds, and Arch and Dorothy Hunt for their collective information on the earlier years;

to David Esling for his photographic assistance;

to my dear friend Frances Salter for her word processing skills and patience.

K.C.

GOODNIGHT